

# CERTIFICATE OF LOCATION OF GOVERNMENT CORNER

NORTHEAST Corner of Section 22, Township 107N, Range 39W

5th Principal Meridian, State of Minnesota, County of MURRAY

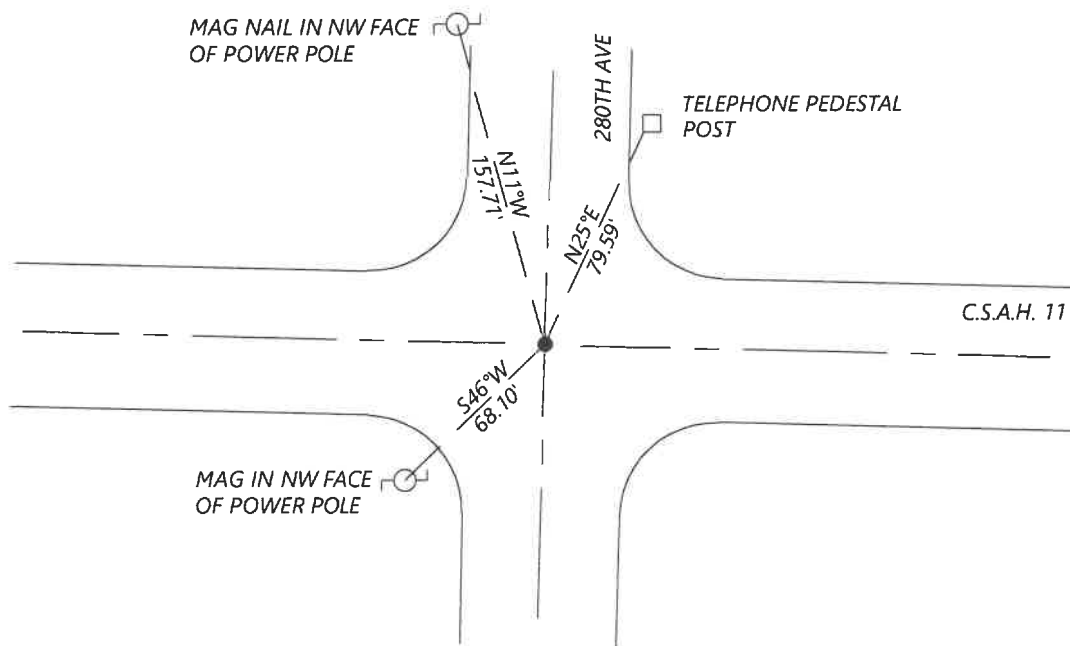
At the corner location shown on the sketch:

On 8/27/2020 found a 1" IRON PIPE WITH SEAL LS43844 DOWN 0.3' BELOW GRADE  
DATE

left monument as found       lowered monument       removed monument (explain)

On \_\_\_\_\_ placed a \_\_\_\_\_  
DATE

### SKETCH OF REFERENCE TIES



Statement of evidence for this corner location is on back of this page.

I hereby certify that this document was researched and prepared by me or under my direct supervision and that I am a licensed Land Surveyor under the laws of the State of Minnesota.

Signature [Handwritten Signature]

Date 6/16/2021 License No. 45874

Title:

- Land Surveyor       Professional Engineer
- County Surveyor       County Engineer

### OFFICE OF THE COUNTY RECORDER

County of Murray

I hereby certify that this document was filed in the Co.

Recorder's office at \_\_\_\_\_ M. on the \_\_\_\_\_ day of \_\_\_\_\_ A.D. 20 \_\_\_\_\_

County Recorder Karen Brown

by JUN 22 2021, Deputy

DOCUMENT NO. \_\_\_\_\_

**Statement of Evidence:**

Northeast Corner of Section 22, Township 107 North, Range 39 West, 5th Principal Meridian, Murray County, Minnesota.

*No GLO Notes*

- 1963            *Highway Department records shows an iron pin (assumed) at the corner location*
- Nov. 2005      *Corner certificate filed by Dan Buettel says he dug with a backhoe at the location of a found spike and found nothing. Replacing spike with a 1" pipe and cap LS 43844. He lists the Murray County coordinates:    N: 179383.83    E: 569418.61*
- Sept. 2020     *Westwood Professional Services searched and found an iron with cap LS43844. Coordinates fit those listed by 2005 certificate. I accepted the found monument and set reference ties.*

Analysis of the recovered data, field evidence and survey measurements, indicates that the monument found is the correct perpetuation of this corner. For additional information concerning this corner please contact Westwood Professional Services.